

# High Speed A3 Flatbed Scanner

## Quick Start Guide

### 1 Package Contents

Unpack the package and inspect the items closely to make sure no item is damaged. The package should include:

- 1 Scanner
- 2 USB Cable
- 3 Power Adapter
- 4 Installation CD
- 5 Quick Start Guide

### 2 Installing Driver

#### Windows

**NOTE: Please complete the software installation before connecting the scanner. Do not connect USB cable to the scanner or PC at this stage.**

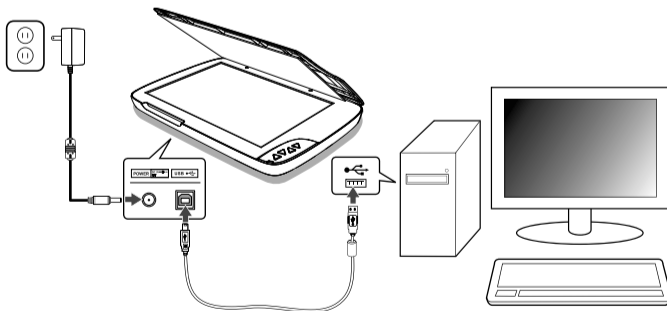
1. Insert the software Installation CD into your CD- or DVD-ROM drive. The CD will run automatically, and then a main menu will pop-up on the screen.  
**Note:** If the Autorun does not work, click on "AUTORUN.exe" file.
2. Select "**Scanner Driver**" from the main menu.  
**Note:** The Panel V2.0 will be installed with the Scannr Driver.
3. Follow on screen instructions to complete the installation procedures.
4. InstallShield Wizard will remind you when the software installation is complete.  
**Note:** Return to the main menu to install other software to your computer to enable certain features.

#### Mac

1. Insert the software Installation CD into your CD- or DVD-ROM drive. Double click icon on the desktop.
2. Double click **Image Acquire** folder, and then ImageAcquire icon. Follow on screen instructions to complete the installation procedures.
3. Double click **Scanner driver** folder, and then the scanner model icon. Follow on screen instructions to complete the installation procedures.

### 3 Installing Hardware

1. Connect one end of supplied power adapter to the scanner's DC IN jack, and the other end to a power socket.
2. With the computer being turned on, connect one end of the USB cable to the USB port of your computer and the other end to the scanner.  
**Note:** Two pop-ups will appear at the right side of task bar after the computer detects the new hardware being inserted.
3. The Windows Hardware Manager will detect the hardware and remind you to start to install it. Follow on screen instructions to complete installation. The pop-up message will appear at the right side of task bar when the hardware installation is complete.



### 4 Placing an item for scanning

1. Open the scanner cover. Place the item facing down on the flatbed glass.
2. Position the paper as indicated by the position arrow mark. Close the scanner cover.

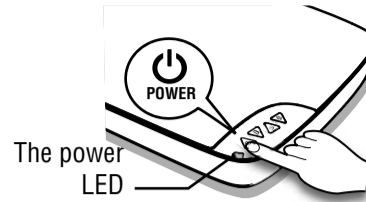
**Note:** The hinges of the scanner lid can extend upwards to accommodate thick items.

### 5 Turning on the power

Press the **POWER** button to turn on the scanner. The power LED lights up in blue.

**Note:** Press and hold for 3 seconds to turn off.

**Note:** The scanner will turn off after 15 minutes if no operation.



### 6 Hardkey Settings (Windows only)

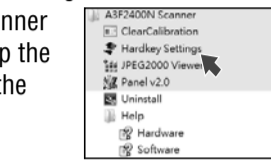
To use the scanner's buttons for a quick scanning you need to set up the Hardkey Settings as following:

Press Start > All Programs > the scanner model > Hardkey Settings to bring up the Hardkey Settings screen for setting the Scan, and PDF buttons.

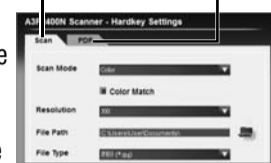
**Scan** - Press it to set up Scan Mode, Resolution, File Path, File Type and etc.

**PDF** - Press it to set up Scan Mode, Resolution, File Path, and Searchable PDF.

Press Start > All Programs > the scanner model > Help > Hardware file to find more details of the hardkey settings.



Scan Setting PDF Setting



### 7 Scanning

#### Windows

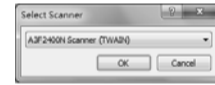
You can scan in three ways with the Scanner, namely via the scanner's **SCAN** button, the Panel V2.0 or via the TWAIN panel.

**The easiest way to make a quick scan is via the scanner's SCAN button:**

Press the **SCAN** button on the scanner, the status and progress bar will show scanning progress. Upon completion, the scanned image will be saved in your computer and displayed in the Panel V2.0 or the default viewer program.

**To scan with the Panel V2.0, do following:**

1. Press the **PANEL** button on the scanner to launch the Panel V2.0 software.
2. Press the **Scan** button to start scanning.
3. Press the **Save** button to save the scanned image.



**To scan with TWAIN Dialog box, do following:**

1. Launch the TWAIN-compliant program (e.g. Arcsoft Media Impression, Photoshop)
2. Under the Import menu, select the Acquire command and choose the scanner model.
3. Click Acquire. The TWAIN dialog box appears.
4. Click **Preview** to prescan. Set the scan area using the marquee, then click **Scan**.
5. Click **Save** to save the scanned image.



#### Mac

1. Double click icon from Mac's 'Applications' folder. Choose the scanner model from the Image Acquire window, then click Acquire.
2. Click **Preview** to prescan. Set the scan area using the marquee, then click **Scan**.
3. Click **Save** to save the scanned image.



### 8 Using the Scanner Buttons (Windows only)

**Note: These scanner buttons work only with the Windows computers.**

The scanner's buttons allow you to perform a quick scanning in an easy way.

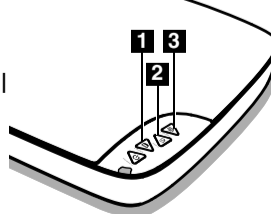
#### 1 SCAN button

Scans directly to the default viewer program, and the scanned image will be saved in the computer.

#### 2 PDF button

Scans and converts the scanned image directly to a PDF file, and the scanned image will be saved in the computer.

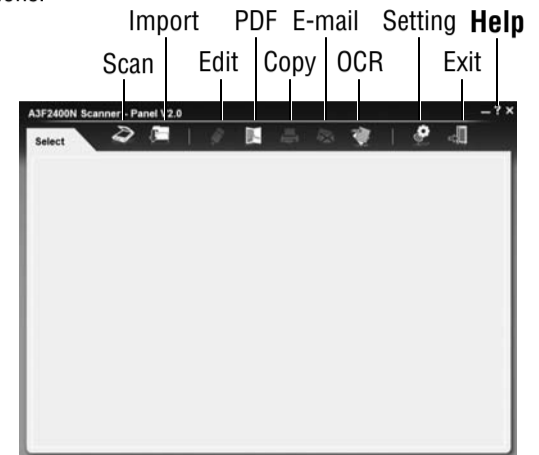
**Note:** To convert to a searchable PDF, you must install the ABBYY FineReader and the Adobe Acrobat Reader from the installation CD.



### 3 PANEL button

Opens the Panel V2.0 to access additional features including Edit, OCR, Settings and etc.

**Note:** To perform OCR text recognition on scanned documents, you must install the ABBYY FineReader from the installation CD. For more details about the Scanner Panel, press the Help button on the Panel V2.0, or press Start > All Programs > the scanner model > Help > Software file to find more details of the functions.



### Safety Information

1. Keep away from water or moisture and dusty areas.
2. Never store in hot and very cold areas.
3. Only use attachments/accessories specified by the manufacturer.
4. No objects filled with liquids, such as vases, shall be placed on apparatus.
5. Avoid dust contamination when the scanner is not in use.
6. When left unused for a long period of time, the unit should be disconnected from the power cable.
7. Avoid environments where the scanner would be exposed to direct sunlight (or any other source of excessive heat) for long periods of time.
8. Protect the scanner from potential liquid spills such as soda, coffee, tea, and etc.
9. Be carefully to keep it without dropping it or strong impact.
10. Operate the scanner on a level, well-grounded work surface, free of excessive vibration.
11. Don't open the scanner case alone without technical support because there is danger of electrical shock.
12. Position the equipment near a power outlet where it can be easily accessed when plugged in.

### Specifications

<b>Scanner Type</b>	Flatbed
<b>Scanning Element</b>	Contact Image Sensor (CIS)
<b>Light Source</b>	Three-color (RGB) LEDs
<b>Scanner Buttons</b>	POWER, SCAN, PDF, PANEL
<b>Scan Mode</b>	Color: 48-bit, 24-bit Gray: 16-bit, 8-bit Line art: 1-bit
<b>Scan Area (Max.)</b>	299mm x 427mm (11.8" x 16.8")
<b>Resolution</b>	
A3F1200N	Optical: 1200 dpi (H) x 1200 dpi (V) Enhanced: 9600 dpi x 9600 dpi
A3F2400N	Optical: 2400 dpi (H) x 2400 dpi (V) Enhanced: 9600 dpi x 9600 dpi
<b>Interface</b>	Hi-Speed USB 2.0
<b>Supported OS</b>	Windows XP (Service Pack 3) / Vista / 7 / 8 Mac OS X 10.7 - 10.9
<b>Power Consumption</b>	12VDC, 2A, 24W (Input: 100~120VAC or 200~240VAC, 50~60Hz)
<b>Power Saving</b>	Auto power off after no operation for 15min
<b>Dimension (LxWxH)</b>	576 mm x 406 mm x 72 mm (22.6" x 15.9" x 2.8")
<b>Weight</b>	4.6 kgs (10.1 lbs)
<b>Software</b>	Windows: Scanner Driver (with the Panel V2.0), ABBYY FineReader, ArcSoft Media Impression, Adobe Acrobat Reader Mac: Scanner Driver, ImageAcquire

\* Images and screenshots shown in this guide are example only.

