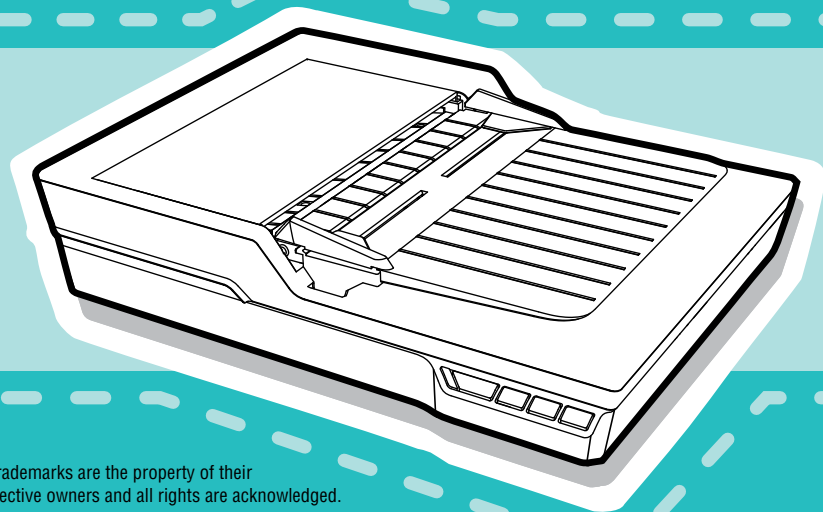


iDocScan S20

High Performance Document Scanner



User Guide

FOR WINDOWS

All trademarks are the property of their respective owners and all rights are acknowledged.

Images and screenshots used in this User Guide may vary according to the devices used and its operating system. Images and screenshots shown inside are example only.

ENGLISH

DEUTSCH

FRANÇAIS

ITALIANO

ESPAÑOL

PORTUGUÊS

РУССКИЙ

SAFETY AND PRECAUTIONS

General Precautions

- Never store the unit in hot, or very cold, or humid or dusty places.
- For an extended storage period, we recommend storing the unit in a cool and dry place.
- If the scanner is left in extreme cold or hot conditions, allow it to adjust to normal room temperatures before use.
- Only use accessories included with the scanner.
- When left unused for a long period of time, remove the power plug from the outlet.
- Always handle the unit with care. Avoid dropping and strong impact.
- Avoid objects (e.g. neckties, long hair, etc) being caught in the scanner during a scanning operation.
- Do not scan sharp objects or hard abrasive surfaces to avoid damage to the lens and other parts.
- Do not scan documents with glue, grease, correction fluid, or wet ink on it which can cause malfunctions.
- Operate the unit on a level, well-grounded work surface, and free of excessive vibration.
- Don't open the unit. Risk of electric shock.
- When moving the scanner, disconnect the power cord and connection cable.
- When doing maintenance on the scanner, remove the power plug from the outlet.
- Do not leave the scanner within the reach of children.

Environmental Information



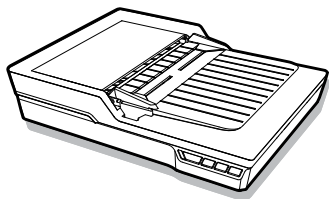
Discarded electrical and electronic appliances are recyclable and should separate from the household waste. Please actively support in conserving resources and protecting the environment by returning this appliance to the collection centers (if available).

CONTENTS

SAFETY AND PRECAUTIONS	2	Scanning with iDocScan Program.....	14
CONTENTS.....	3	Setting Up the Scan Settings	14
UNPACK.....	4	Scanning a Single-Page Document.....	16
SCANNER PARTS.....	5	Scanning Multi-Page Documents	16
SYSTEM REQUIREMENTS	6	Overview of the iDocScan Panel	16
INSTALLATION.....	7	Scanning via TWAIN or WIA interface.....	17
Assembling the Rear Tray	7	Useful Scanner Features	18
Installing Software	7	Scanning Business Cards	18
Installing the Scanner Driver	7	Scanning Long Paper	18
Installing Other Software	8	MAINTENANCE	19
Connecting the Scanner	8	Cleaning the Scanner	19
PREPARATIONS.....	9	Cleaning the ADF Parts	19
Turning On/Off the Scanner.....	9	Cleaning the Flatbed Glass	19
Automatic Power-Off Function.....	9	Calibrating the Scanner.....	20
Placing Original(s)	9	Replacing the Separation Pad	20
Inspecting Original(s)	9	Clearing Document Jams in the ADF.....	21
Placing Documents in the ADF	10	Tips for Preventing Document Jams.....	21
Placing Cards in the ADF	11	TROUBLESHOOTING	22
Placing Document on the Flatbed	11	SPECIFICATIONS	25
SCAN OPERATIONS	12		
Scanning with Hotkey Buttons	12		
Setting up Hotkey Buttons	12		
Starting Hotkey Scanning	13		

UNPACK

Make sure following items are included.



Scanner



Rear Tray (See p.7)



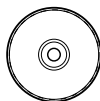
Power Adapter (See p.8)



USB Cable (See p.8)



Separation Pad (See p.20)



Installation CD (See p.7) (*)



User Guide

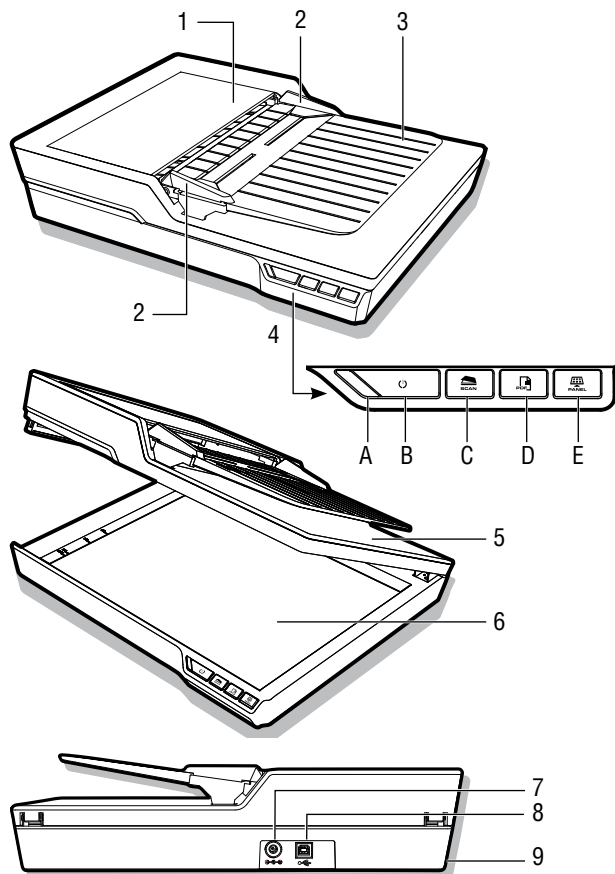


Calibration Sheet (See p.20)

(*) The following are included in the Installation CD:

- Scanner Driver (TWAIN and WIA / iDocScan S20 Program/ Hotkey Utility / Calibration Utility) (for Windows)
 - ABBYY FineReader
 - ArcSoft Media Impression
 - Adobe Acrobat Reader
-

SCANNER PARTS



Parts	Functions
1 ADF Cover	Opens the cover of the ADF (Auto Document Feeder) when maintenance is required.
2 Width Guides	Adjusts the Guides to match the document width.
3 ADF Input Tray	Holds the documents to be fed into the ADF (Automatic Document Feeder) for scanning.
4 Operation Panel	
A Power LED	Emits green light when the scanner is turn on.
B Power Button	Turns on or off the power.
C SCAN Button	Performs Hotkey scanning of the image files.
D PDF Button	Performs Hotkey scanning of the multi-page PDF files.
E PANEL Button	Opens the iDocScan S20 program.
5 Flatbed Cover	Opens to reveal the Flatbed Glass.
6 Flatbed Glass	Holds the single-page document to be scanned.
7 Power Jack	Connects the Power Adapter.
8 USB Port	Connects the USB Cable to a computer.
9 Rear Tray Slots	Used to mount the Rear Tray.

SYSTEM REQUIREMENTS

Following minimum system requirements are recommended to obtain the best performance for running your iDocScan scanner.

- Computer with Intel Pentium 1.3GHz CPU or higher
- SVGA color screen
- 2GB RAM or greater
- USB 2.0 Hi-Speed
- CD-ROM or DVD-ROM drive
- 1GB available hard disk space for software installation
- Supported operating systems: Windows XP, Vista, 7, 8 and 8.1

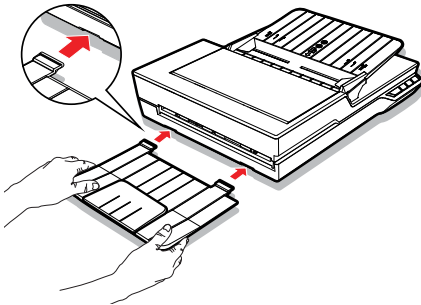
NOTE: The scanning speed and performance are determined by the specifications of your computer. The higher specification of your computer, the better the scanner will be performed.

INSTALLATION

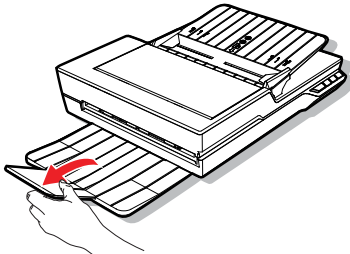
Assembling the Rear Tray

Follow below steps to attach the Rear Tray to the scanner for holding the paper as it exits from the ADF.

1. Locate the Rear Tray Slots on the lower back of the scanner.
2. Insert the Rear Tray tabs into the slots on the scanner.



3. Flip open the extension on the Rear Tray.



Installing Software

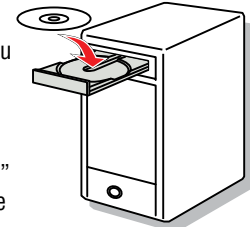
Please complete the software installation before connecting the scanner. NOTE: Do not connect USB Cable to the scanner or your computer when starting installation process.

Installing the Scanner Driver

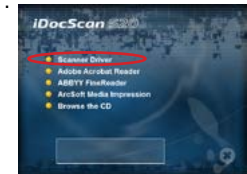
The scanner comes with the scanner driver that is packaged with TWAIN / WIA driver, Hotkey Utility and the iDocScan S20 program. You can either scan from any TWAIN-compatible applications by selecting a TWAIN or WIA user interface, or you can use the Hotkey Utility for Hotkey scanning, or you may also use the iDocScan S20 program for scanning as your preference.

1. Insert the Installation CD into your CD- or DVD-ROM drive. The installation menu will open automatically.

NOTE: If the installation menu does not open automatically, double click on the CD- or DVD-ROM icon in the "Computer" or "Windows Explorer", then click on the AUTORUN.exe icon.



2. In the main menu, select "**Scanner Driver**".
3. Click "Next" when the Welcome screen is displayed, then follow on-screen instructions to complete installation.
4. Click "Finish" when the installation is complete.
5. Remove the Installation CD from your computer.



INSTALLATION

NOTE: If you want to uninstall the scanner driver, be sure to exit the iDocScan S20 hotkey by right-click on the icon from the Show Hidden Icons in the taskbar before uninstalling process.



Installing Other Software

Following applications are included with the scanner, please install them to get the functions of the scanner to work properly.

To install these applications, return to the CD main menu and click on the application you want to install.

Adobe Acrobat Reader - Adobe Acrobat Reader is a program to open, view, search, and print PDF files. For a complete operation of the PDF function of the scanner, please install this program.

ABBYY FineReader - ABBYY FineReader allows to scan text and convert it to a text document in a word processing program. For a complete operation of the OCR function of the scanner, please install this program.

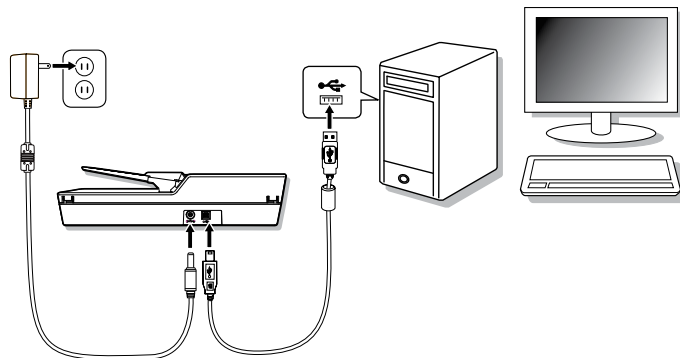
ArcSoft MediaImpression - ArcSoft MediaImpression is a program that allows you to read, edit and organize images.



NOTE: Click the "Browse the CD" from the CD main menu to browse the full contents of the Installation CD.

Connecting the Scanner

1. Connect one end of supplied Power Adapter to the scanner's DC IN jack, and the other end to a power socket.
2. With your computer turned on, connect the USB Cable to the USB Port on your computer and the other end to the side of the scanner.



Turning On/Off the Scanner

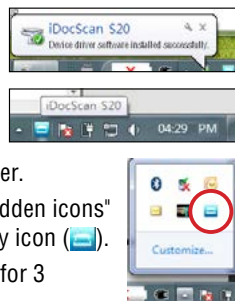


1. Press the **Power** Button to turn on the scanner.

- The Power LED turns GREEN when the scanner is turned on.

2. Your computer then recognizes that a scanner has been plugged into the USB Port and automatically loads the Hotkey Utility (🔑) in the taskbar to run the scanner.

- You may need to click on the "Show hidden icons" arrow in order to find the Hotkey Utility icon (🔑).



To turn off the power press the **Power** Button for 3 seconds until the Power LED turns off.

Automatic Power-Off Function

By default, when the scanner has no operations for 15 minutes, the scanner will automatically turn the power off, and the Hotkey Utility will then be disabled (🔑) when the power is off.

To resume the function and the Hotkey Utility (🔑), press the **Power** Button to turn on the scanner.

Placing Original(s)

Inspecting Original(s)

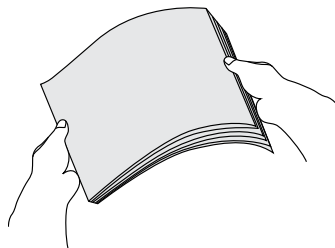
Please inspect your original(s) before scanning to prevent paper jams and protect documents.

- Do not use sheets other than those with the specified size, quality, and weight as the Specification (p.24) to feed in the ADF tray.
- Do not mix different paper types and paper sizes.
- Ensures staples and paper clips have been removed prior to scanning as they may cause damage to the scanner and document.
- Do not feed paper with wet ink or liquid correction fluid, curls, wrinkles, folds, irregular shapes or tears into the ADF tray.
- Do not scan fragile photos and important originals using the ADF as misfeeding may wrinkle or damage them. Use the flatbed instead.
- Do not overload the ADF Input Tray. The paper capacity is 60 sheets for the plain paper or 20 cards for the business cards.
- If a stack of plain paper or business cards cannot be fed into the ADF properly, try to reduce the number of plain paper or cards in the stack.
- When scanning a stack of small business cards or other small paper, place the long side of the paper parallel with the Width Guides.
- We recommend that long paper to be fed in ADF Input Tray one sheet at a time.

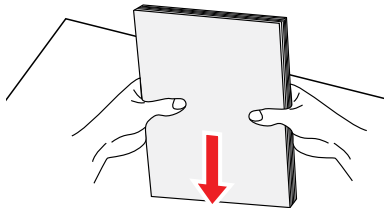
PREPARATIONS

Placing Documents in the ADF

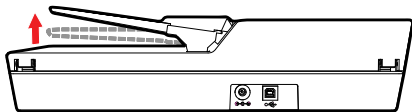
1. Fan the stack of the documents to loosen them.



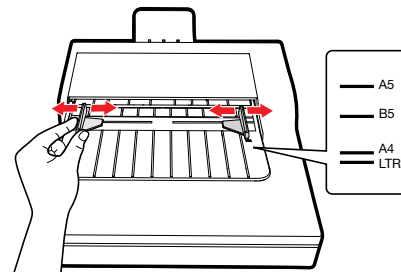
2. Straighten the top edges of the documents on a level of surface.



3. Slightly lift the ADF Input Tray until the legs are fully extended and held in position.

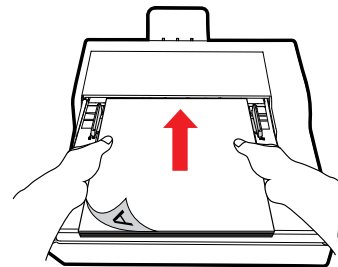


4. Slide either side of the Width Guide to the mark indicating the desired paper size.



5. Place your single-sided documents face down with the tops in first, and then slide the stack into the ADF tray.

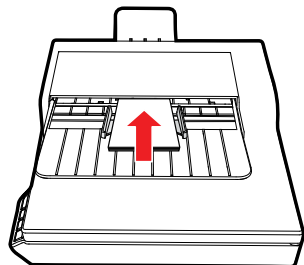
➤ Verify that the Width Guides touches the edges of the stack.



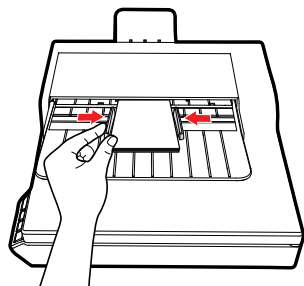
PREPARATIONS

Placing Cards in the ADF

1. Place the stack of cards face down with the long side parallel with the Width Guides.



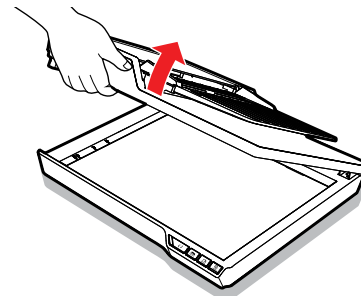
2. Adjust the Width Guides to center the cards. Make sure the Width Guides touch the edges of the cards.



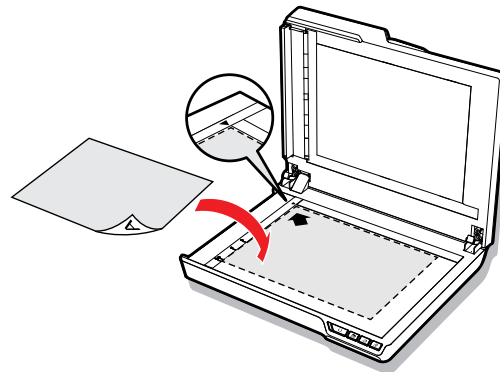
TIPS: Choose “Name Card” from the Scan Size in the Scan Setting Window when scanning a stack of cards in the ADF.

Placing Document on the Flatbed

1. Lift open the Flatbed Cover.



2. Place single-page document face down on the Flatbed Glass. Position the document as indicated by the position arrow mark.






3. Close the Flatbed Cover.

SCAN OPERATIONS

Scanning with Hotkey Buttons

Setting up Hotkey Buttons

The scanner provides Hotkey buttons that can be customized for scanning directly to a specified location on your computer in one step. To setup Hotkey buttons, please follow these steps:

1. With the scanner turned on and connected to your computer, click the  icon in the taskbar to open the “Button Settings” dialog.
 - If you cannot find the  icon in the taskbar, press Start > All Programs > iDocScan S20 > Hotkey Utility to activate it.
2. Click the  button to open the “Scan Setting” and the “PDF Setting” window for changing the settings.



Basic Settings

Properties	Description
Scan Source	<p>Choices: “Flatbed”, “ADF (Simplex)”.</p> <ul style="list-style-type: none">• ADF (Simplex): Choose when scanning multi-page single-sided documents fed in the ADF.• Flatbed: Choose when scanning single-page document placed on the flatbed glass.
Scan Mode	<p>Select a mode for scanning your original(s).</p> <p>Choices: “Color”, “Gray”, “B&W”.</p>

Choices: “Auto”, “A4”, “A5”, “B5”, “Letter”, “Name Card”, “Long Sheet”.

NOTE: “Name Card” and “Long Sheet” are available only when scanning from the ADF.

NOTE: Options of the Scan Size may vary based on the Resolution is set.

Scan Size

- Choose “Auto” to let the scanner automatically detect the size of your original.
- Choose “Name Card” when scanning business cards in a batch up to 20 cards.
- Choose “Long Sheet” when scanning long paper up to 635mm in length.

Choices : 100dpi, 200dpi, 300dpi, 600dpi.

NOTE: High resolution images occupy more storage space and require more processing time for scanning.

Resolution

Save Path

Set a file location to save the scanned files.

Default

Reset the Setting to the default settings.

Scan Settings

Choices: JPEG(*.jpg), BMP (*.bmp), TIFF(*.tif), Multi-TIFF(*.tif).

NOTE: Image can be saved as JPEG at 600 dpi/Color and 1200 dpi/Color only when scanning from the ADF.

NOTE: Choose Multi-TIFF when scanning multi-page originals into a single TIFF by using the ADF only. Do not attempt to create a multi-page TIFF file that exceed 2GB, otherwise no multi-page TIFF will be created.

File Type

SCAN OPERATIONS

PDF Settings

Searchable PDF Check the checkbox to convert document into a text-searchable PDF file.
NOTE: Choose PDF when you need to scan multi-page documents and convert it to a single PDF file.

OCR Language Choose a language for text recognition.

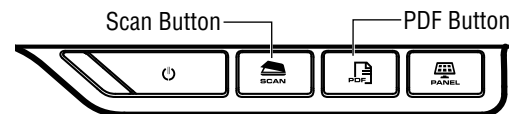
Advanced Settings


Deskew Image skew generally occurs when the original is placed incorrectly in the ADF tray. Tick the checkbox to automatically straighten skewed pages as much as possible to maintain it's original size.
NOTE: Deskew is only enabled when the Scan Size set to "Auto".

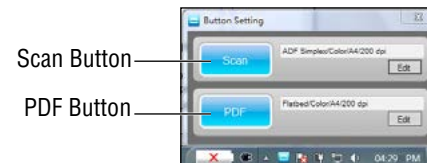
Blank Page Removal Tick the checkbox to automatically remove the blank page(s) from the scanned document(s). This function works best with white or light-colored pages. Depending on the originals, some pages that are not blank may be detected as blank due to a small amount of text.

Starting Hotkey Scanning

You can perform Hotkey scanning using either the **SCAN** or **PDF** Button on the Operation Panel of the scanner,



or click the  icon in the taskbar to open the "Button Settings" window.



Hotkey scanning with the SCAN Button:

- Place the original(s).
 - Refer to the "Placing Original(s)" section for the ADF or the flatbed.
- Select the respective Scan Source as your original(s) to be placed.
 - Select "Flatbed", or "ADF (Simplex)" in the Scan Source dropdown list.
- Press the **SCAN** Button.
 - The "Scanning in progress" bar will appear showing the scan status. After the scan is complete, the image will be saved in the specified location with automatically generated filename.

SCAN OPERATIONS

Hotkey scanning with the PDF Button:

1. Place the original(s).
 - Refer to the “Placing Original(s)” section for the ADF or the flatbed.
2. Select the respective Scan Source as your original(s) to be placed.
 - Select “Flatbed” or “ADF (Simplex)” in the Scan Source dropdown list.
3. Press the **PDF** Button on the scanner.
 - The “Scanning in progress” bar will appear showing the scan status. After the scan is complete, the PDF file will be saved in the specified location with automatically generated filename.

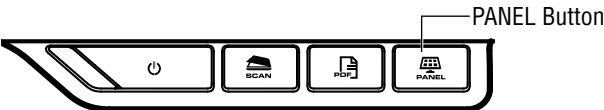
Scanning with iDocScan Program


The iDocScan S20 program is specially designed to work with this scanner for easy scanning and other functions.

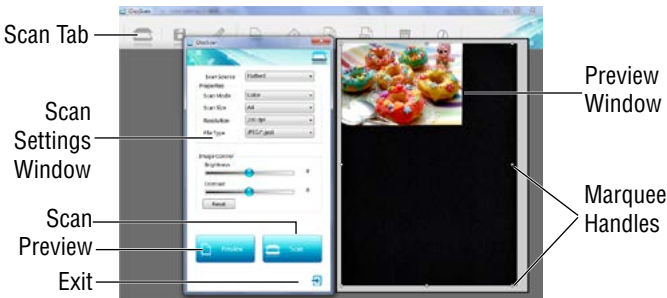
Setting Up the Scan Settings

Before you begin scanning, make sure you have set up the scan settings properly.

1. Press the **PANEL** button on the scanner, or press Start > All Programs > iDocScan S20 > iDocScan S20 to launch the iDocScan S20 program.



2. Press the  (Scan) tab to launch the Scan Setting window for changing the settings.



Scan Settings	
Properties	Description
Scan Source	Choices: “Flatbed”, “ADF (Simplex)”.
	<ul style="list-style-type: none">• ADF (Simplex): Choose when scanning multi-page single-sided documents fed in the ADF.• Flatbed: Choose when scanning single-page document placed on the flatbed glass.
Scan Mode	Select a mode for scanning your original(s). Choices: “Color”, “Gray”, “B&W”.
Resolution	Choices : 100dpi, 200dpi, 300dpi, 600dpi, 1200dpi. NOTE: “1200dpi” is available only when scanning from the Flatbed.



SCAN OPERATIONS

Scan Size	<p>Choices: “Auto”, “A4”, “A5”, “B5”, “Letter”, “Name Card”, “Long Sheet”.</p> <p>NOTE: “Name Card” and “Long Sheet” are available only when scanning from the ADF.</p> <p>NOTE: Options of the Scan Size may vary based on the Resolution is set.</p> <ul style="list-style-type: none"> Choose “Auto” to let the scanner automatically detect the size of your original. Choose “Name Card” when scanning business cards in a batch up to 20 cards. Choose “Long Sheet” when scanning long paper up to 635mm in length.
File Type	<p>Choices: JPEG(*.jpg), BMP (*.bmp), TIFF(*.tif), Multi-TIFF(*.tif)</p> <p>NOTE: Image can be saved as JPG at 600 dpi/Color and 1200 dpi/Color only when scanning from the ADF.</p> <p>NOTE: Choose Multi-TIFF when scanning multi-page originals into a single TIFF by using the ADF only. Do not attempt to create a multi-page TIFF file that exceed 2GB, otherwise no multi-page TIFF will be created.</p>



Advanced Setting for ADF	
Deskew	<p>Image skew generally occurs when the original is placed incorrectly in the ADF tray.</p> <p>Tick the checkbox to automatically straighten skewed pages as much as possible to maintain it's original size.</p> <p>NOTE: Deskew is only enabled when the Scan Size set to “Auto”.</p>
Blank Page Removal	<p>Tick the checkbox to automatically remove the blank page(s) from the scanned document(s).</p> <p>This function works best with white or light-colored pages. Depending on the originals, some pages that are not blank may be detected as blank due to a small amount of text.</p>
Advanced Setting for Flatbed	
Image Control	<p>Use the Brightness and Contrast sliders to adjust the pre-scanned image with a value between -127 to 127.</p> <p>Press the Reset button to reset the values to 0.</p> <p>NOTE: Brightness and Contrast does not support the Scan Mode set to “B&W”.</p>
<p>For details on functions of the iDocscan S20 program, press the Information tab on the iDocScan S20 main window.</p>	

SCAN OPERATIONS

Scanning a Single-Page Document

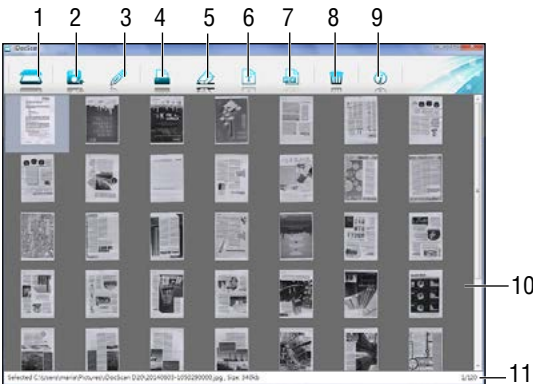
1. Place the original on flatbed.
 - Refer to the “Placing Original(s)” section for flatbed.
2. Press the  (Scan) tab to launch the scan setting window.
3. Select “Flatbed” in the Scan Source.
4. Press the **Preview** button to preview your image in the preview window at the right side.
 - When the image appears, you can resize the scan area by dragging the marquee handles.
5. Press the **Scan** Button.
 - The “Scanning in progress” bar will appear showing the scan status. After the scan is complete, the image will be saved in the default file location with automatically generated filename.
6. Press the  (Exit) button to return to the iDocScan S20 main window, and the scanned image will be displayed as a thumbnail.

Scanning Multi-Page Documents

1. Place the originals in the ADF tray.
 - Refer to the “Placing Original(s)” section for the ADF.
2. Press the  (Scan) tab to launch the scan setting window.
3. Select “ADF (Simplex)” in the Scan Source dropdown list as your original(s) to be placed.
4. Press the **Scan** Button to start scanning.
 - The “Scanning in progress” bar will appear showing the scan status. After the scan is complete, the images will be saved in the default file location with automatically generated filename.
5. Press the  (Exit) button to return to the iDocScan S20 main window, and the scanned images will be displayed as thumbnails.

Overview of the iDocScan Panel

The following is a brief overview of the functions of the iDocScan S20 program. For detailed functions of the iDocScan S20 program, press the Information tab on the iDocScan S20 main window.



Items		Functions
1	Scan	Launch the scan setting window to start a scan.
2	Save	Save the scanned image in the preferred file folder, filename, and the location.
3	Edit	Edit your scanned image with tools such as Crop, Rotate CW90°, Rotate CCW90°, Flip H, Flip V, Zoom in, Zoom out, Fit, and 1:1 ratio.

SCAN OPERATIONS

4	Print	Press it to print out the scanned image from your printer.
5	Email	Send the scanned image as an email attachment using your email software on your computer.
6	OCR	Perform text recognition by using the OCR software installed on your computer.
7	PDF	Launch the PDF setting window to convert the scanned image to a searchable PDF file.
8	Delete	Delete the selected image.
9	Information	Access the iDocScan S20 Help file.
10	Display Area	Scanned Images will be displayed as thumbnails.
11	File Location Field	Shows the default file location field and the number of total scans.

For details on functions of the iDocscan S20 program, press the Information tab on the iDocScan S20 main window.

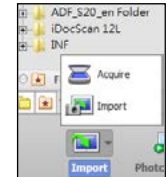
Scanning via TWAIN or WIA interface

This scanner allows you to scan from your TWAIN-compliant and WIA-compliant program using TWAIN and WIA user interface. Following is an example of using TWAIN interface for scanning. The steps may slightly different depending on the application you use.

1. Launch a TWAIN-compliant program (e.g. Arcsoft Media Impression).
2. Place the original(s) in the ADF or on flatbed.

- Refer to the “Placing Original(s)” section for the ADF or the Flatbed.

3. Press the Pictures button from the main page. Under the Import menu, select the Acquire icon, and then choose your iDocScan S20 scanner.



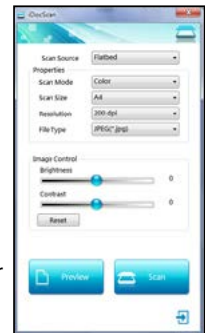
4. Click Acquire. The Scanner Setting window then appears.

5. Select the respective Scan Source as your original(s) to be placed.

- Select “Flatbed”, “ADF (Simplex)” in the Scan Source dropdown list.


6. Setup other scan settings (e.g. Scan Mode, Scan Size, Resolution).

7. For the Flatbed scanning, press the **Preview** button. After the preview is complete press the **Scan** Button.



- For the ADF (Simplex) scanning, press the **Scan** Button.

- The “Scanning in progress” bar will appear showing the scan status.



8. Press the  (Exit) button to close the Scan Setting window, the scanned image(s) will then be imported in the program.

SCAN OPERATIONS

Useful Scanner Features

Use following features when scanning special types of paper.



Scanning Business Cards

1. Place a stack of business cards in the ADF.
 - Refer to the “Placing Original(s)” section for the ADF.
2. Press the **PANEL** button on the scanner to launch the iDocScan Settings or click the  icon in the taskbar to open the “Button Settings” window.
3. Select the respective Scan Source as your original(s) to be placed.
 - Select “ADF (Simplex)” for scanning single-sided cards.
4. Select the “Name Card” from the Scan Size dropdown list.
5. Press the **Scan** Button to start scanning.
 - The “Scanning in progress” bar will appear showing the scan status. After the scan is complete, the images will be saved in the default file location with automatically generated filename.
6. Press the  (Exit) button to return to the iDocScan S20 main window, and the scanned image(s) will be displayed as thumbnails.



Load a maximum of 20 business cards in a stack in the ADF. If the stack of cards cannot be fed properly, try to reduce the number of cards in the stack.

Scanning Long Paper

1. Place your long paper in the ADF.
 - Refer to the “Placing Original(s)” section for the ADF.
2. Press the **PANEL** button on the scanner to launch the iDocScan Settings or click the  icon in the taskbar to open the “Button Settings” window.
3. Select the respective Scan Source as your original(s) to be placed.
 - Select “ADF (Simplex)” for scanning single-sided long paper.
4. Select the “Long Sheet” from the Scan Size dropdown list.
5. Press the **Scan** Button to start scanning.
 - The “Scanning in progress” bar will appear showing the scan status. After the scan is complete, the images will be saved in the default file location with automatically generated filename.
6. Press the  (Exit) button to return to the iDocScan S20 main window, and the scanned image(s) will be displayed as thumbnails.



By default, the scanner can accept the long paper up to maximum 635mm in length. The bottom of the scanned image will be cut off if longer than 635mm. Please verify your original before scanning.

MAINTENANCE

Cleaning the Scanner

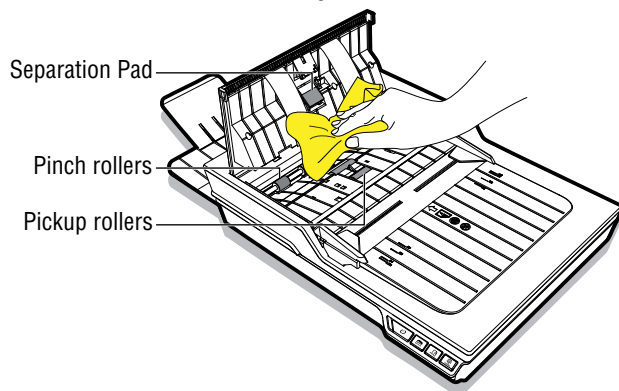
Dust and residues can build up on the Scanner's rollers and glasses to affect image quality. Clean the rollers and glasses periodically to get the best scanning results.

Cleaning the ADF Parts

1. Use a clean, lint-free cloth sprayed with some mild liquid glass cleaner.

NOTE: Never spray the cleaner directly onto the scanner.

2. Lift open the ADF Cover.
3. Wipe the pickup rollers from side to side. Rotate the rollers to clean all around the surface, and then clean the pinch rollers.
4. Wipe the Separation Pad from top to bottom. Be careful not to snag the cloth on the plastic springs on the pad.
5. Close the ADF Cover when cleaning is finished.

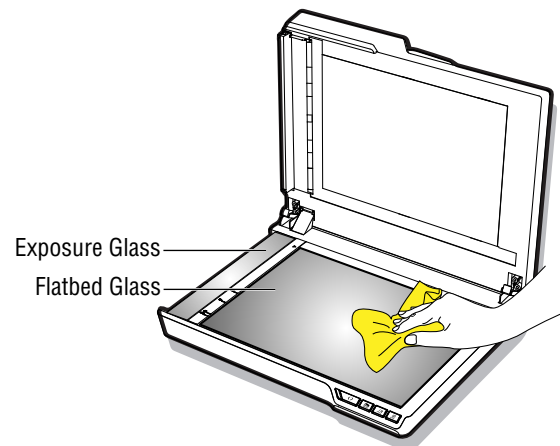


Cleaning the Flatbed Glass

1. Use a clean, lint-free cloth sprayed with some mild liquid glass cleaner.

NOTE: Never spray the cleaner directly onto the scanner.

2. Lift open the Flatbed Cover.
3. Wipe the entire surface of the Flatbed Glass and the Exposure Glass.
4. Close the Flatbed Cover when cleaning is finished.



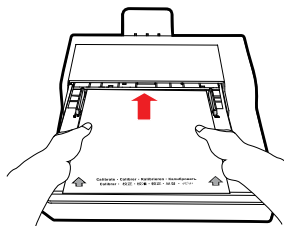
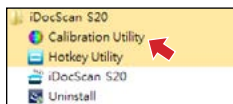
CAUTION: WHEN CLEANING THE SCANNER, BE SURE TO REMOVE THE POWER PLUG FROM THE OUTLET FOR SAFETY.

MAINTENANCE

Calibrating the Scanner

When scanned image's colors appear not to match the colors of the original, or colors appear in the white areas of the images, calibration helps to correct these problems by compensating variations in the scanner components that happens over time.

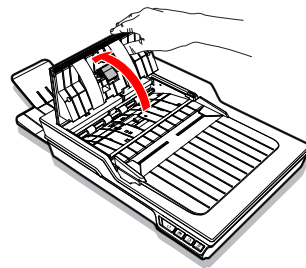
1. Turn on the power of the scanner.
2. Press Start > All Programs > iDocScan S20 > Calibration Utility to open the calibration screen.
3. Remove the plastic foil on both sides of the Calibration Sheet.
4. Insert the Calibration Sheet into the ADF tray with the arrow mark facing up and forward.
5. Press "Calibrate" to start calibrating. The Calibration Sheet will be gradually fed through the ADF.
 - A progress bar will appear indicating the calibration process.
 - Mechanical sounds produced during the calibrating process are normal.
6. Press "Close" after "the calibration is done" window appears.



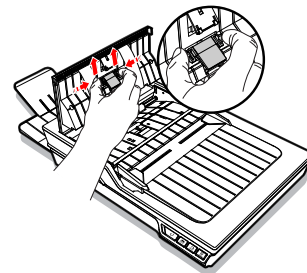
Replacing the Separation Pad

The Separation Pad in the ADF part is a consumable item. After approx. 30000 times of scanning, it may become worn. Replace the Separation Pad when it is worn, damage or misfeeding continues to occur after cleaning. A spare Separation Pad is included with the scanner, please replace it as following steps.

1. Turn off the power, and then lift open the ADF Cover.

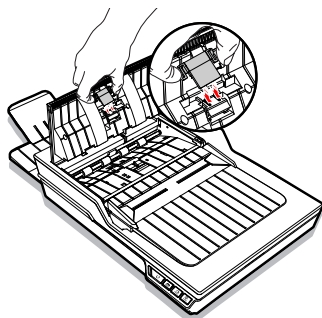


2. Press both springs on each side of the Separation Pad, pull the pad backwards and lift it off the ADF Cover.



MAINTENANCE

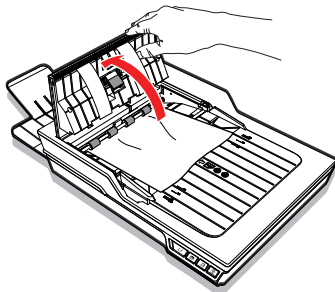
3. Hold the spare Separation Pad and align the springs with the slots on the ADF Cover. Press each spring and then push downward until it locks into place.



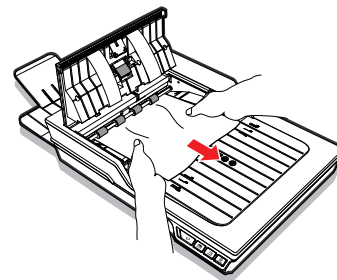
Clearing Document Jams in the ADF

If a document jam occurs, a mechanical noise will produce and an error message will appear. Carefully remove the jammed paper as following.

1. Turn off the power, and then lift open the ADF Cover.



2. Carefully remove the jammed document by pulling evenly with both hands to avoid tearing.



3. Close the ADF Cover back in place.

Tips for Preventing Document Jams

- Do not overload the ADF Input Tray. The paper capacity is 60 sheets for the plain paper or 20 cards for the business cards.
- Do not remove paper from the ADF Input Tray during scanning.
- Do not scan folded, wrinkled, curled, torn paper, or paper with clips or staples.
- Fan and straighten paper before placing in the ADF Input tray.
- Do not mix different paper types and paper sizes.
- Use only the standard size and weight of paper as specification.
- Use the flatbed to scan very thick, extra thin, fragile, glossy paper or other items that cannot go through the Automatic Document Feeder.
- When scanning the small business cards or other small paper, place the long side of the paper parallel with the Width Guides.
- Make sure the Width Guides touch the edges of the paper.

TROUBLESHOOTING

Problems	Solutions
My computer can't detect the scanner or the scanner doesn't start scanning.	<ul style="list-style-type: none">• Check the power supply and cable are connected correctly.• Be sure to restart your computer after the scanner driver is installed.• Check if the power of the scanner is turned on .
Feeding errors and document jams occur in the ADF.	<ul style="list-style-type: none">• Refer to the “Clearing Document Jams in ADF” section for removing the jammed paper, and also read the “Tips for Preventing Document Jams”.• Be sure the ADF Cover is closed properly.• Refer to the “Cleaning the ADF parts” section for cleaning the ADF.• Check If the Separation Pad appears worn, refer to the “Replacing the Separation Pad” section.
Poor scan quality.	<ul style="list-style-type: none">• Inspect your original(s) if they are distorted or damaged.• Refer to the “Cleaning the Scanner” section to clean the ADF parts and the Flatbed Glass.• Verify the scan quality in the software setting and increase the resolution.
White or blank page(s) found.	<ul style="list-style-type: none">• Make sure you have placed the original(s) correctly in the ADF or flatbed as the Scan Source setting.• Make sure the paper is facing the correct direction.
Vertical lines or stains appear on scanned images.	<ul style="list-style-type: none">• Scan a blank page to verify if the lines or stains continue to appear, clean the scanner.• Refer to the “Cleaning the Scanner” section to clean the ADF parts and the Flatbed Glass.• Refer to the “Calibrating the Scanner” section to calibrate your scanner.
Scanned images appear skewed, incomplete or cropped.	<ul style="list-style-type: none">• Place the original(s) correctly in the ADF and flatbed.• Align the documents with the Width Guides and do not exceed the ADF tray capacity.• Tick the “Deskew” checkbox in the Scan Size set to “Auto”.
Deskew doesn't work properly.	<ul style="list-style-type: none">• Originals with darker backgrounds and dark text are difficult to deskew. Deskew may not work properly when deskewing dark images.

TROUBLESHOOTING

Problems	Solutions
Scanning speed is slow.	<ul style="list-style-type: none">• Adjust the scanner software to reduce the resolution and decrease the file size. Lower quality settings generally results in faster scanning speeds.• The BMP format requires a longer time for scanning than other formats.
Text created by the OCR software is incorrect.	<ul style="list-style-type: none">• Select a resolution of minimum 300 dpi in the software settings. The OCR software may not always convert all text correctly. Please check the document for any errors that the OCR may have missed.• The OCR recognition result is generally more accurate with the text-based digital images. Images with mixed content (text, images, and graphics all in the one page) may result less accurate.• Set the scanner color settings to “B&W” if the text is black against a white background.• Check if the quality of the original document is poor through the OCR recognition process.
Scanned images cannot be sent as email attachments.	<ul style="list-style-type: none">• Be sure that you have a default email client installed and configured, in order to use the Email function in the iDocScan program.• Ensure the scanned images do not exceed email size limitations
The OCR function in the iDocScan program cannot be used.	<ul style="list-style-type: none">• Be sure that ABBYY FineReader in the Installation CD is installed in your computer before using the OCR function.
File Type can't be changed to BMP at 600 dpi and 1200 dpi in ADF.	<ul style="list-style-type: none">• The File Type will automatically change to the JPEG format when you scan documents at 600dpi and 1200 dpi in the ADF (Simplex) for best performance.
Message “Insufficient disk space...” appears.	<ul style="list-style-type: none">• Scanning multi-page documents can consume a large amount of disk space over time, scanning may stop because of insufficient disk space. Please clear the destination location from time to time.
Memory becomes insufficient and scanning stops.	<ul style="list-style-type: none">• When scanning conditions that consume a large amount of the computer's memory, scanning may stop due to insufficient memory. Exit the application and change the scanning conditions, such as reduce scanning resolution.• Make sure your computer meets the memory and other system requirements as specified.

TROUBLESHOOTING

Problems	Solutions
Image saved in the multi-page TIFF format cannot be opened by other applications.	<ul style="list-style-type: none">• Not all applications accept the multi-page TIFF format. Applications that do not support multi-page TIFF format will import and display only the first page of the document.• Open the file using the applications that support the multi-page TIFF format.
Multi-page TIFF cannot be created.	<ul style="list-style-type: none">• Scanning a large document to multi-page TIFF file may cause the scanner to stop working due to insufficient memory of computer. Alternatively you can save as multi-page PDF using the scanner's PDF button.• Saving multi-page TIFF images will create very large files, make sure you have enough hard disk space to save the multi-page TIFF images.• Do not attempt to create a multi-page TIFF file that exceed the 2GB limit. If the file size exceeds 2GB, no multi-page TIFF will be created.

SPECIFICATIONS

Scanner type	Color Simplex ADF (automatic document feeder) and flatbed scanner	
ADF (Automatic Document Feeder)	Scan Speed (*)	20ppm (color, 200 dpi, A4, 70 g/m ²) 20ppm (gray, 200dpi, A4, 70 g/m ²) 20ppm (B&W, 200dpi, A4, 70 g/m ²)
	Capacity	60 pages at 80 g/m ² (20 lb), Max thickness: 6 mm (0.24")
	Scanning Side	Simplex (single sided)
	Input Tray Width	9.5" (242 mm)
	Scan Area	Max. W216mm x L356mm (W8.5" x L14") Min. W50mm x 90mm (W2" x L3.5")
	Scan Size	Auto A4 (W210mm x L297mm / W8.3" x L11.7") A5 (W149mm x L210mm / W5.9" x L8.3") B5 (W176mm x L250mm / W6.9"xL9.8") Letter (W216mm x L279mm / 8.5" x 11") Name Card (W55mm / W2.2") Long Sheet (W216mm x L635 mm / W8.5" x L25")
	Paper Weight	Plain Paper: 30-130 g/m ² (8 - 32 lb) Card Stock: 0.3mm (Max. 20 cards)
	Paper Thickness	0.03mm - 0.17mm (Normal), 0.4mm (max)
	Optical Resolution	100dpi - 600dpi
	Daily Duty Cycle	3000 sheets
	Separation Pad Lifetime	30000 Scans

SPECIFICATIONS

Flatbed	Scan Area	Max. 216mm x 300mm (8.5" x 11.8")
	Scan Speed (*)	approx. 5 sec per page (Color, 300 dpi, A4)
	Scan Size	Auto A4 (W210mm x L297mm / W8.3" x L11.7") A5 (W149mm x L210mm / W5.9" x L8.3") B5 (W176mm x L250mm / W6.9"xL9.8") Letter (W216mm x L279mm / W8.5" x L11")
	Optical Resolution	100 dpi - 600 dpi; Maximum1200 dpi for TWAIN & iDocScan Program
	File Format Output	JPEG (*.jpg), BMP (*.bmp), TIFF (*.tif), Multi-TIFF (*.tif), PDF (*.pdf)
Power Saving	Auto power off after no operation for 15 minutes	
Compatibility	TWAIN Compliant (for Windows XP / Vista / 7 / 8 / 8.1) WIA Compliant (for Windows 7 / 8 / 8.1 only)	
Dimension	L430 mm x W334 mm x D100 mm (L16.9" x W13.15" x D3.94")	
Weight	4.43 kgs (9.76lbs)	
Power Supply	12V/2A (Input : 100V ~ 240V, 50/60Hz)	
Operation Temperature	10 °C - 35 °C (59 °F - 95 °F)	

(*) The Scan Speed may vary according to the operation environment of the scanner and the computer, and the contents of the original.

iDocScan *S20*