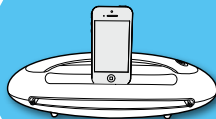
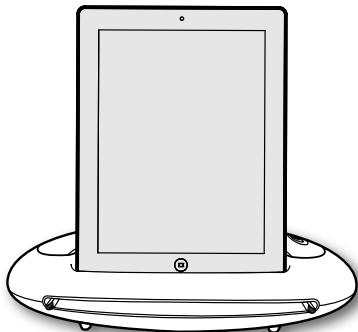
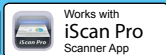


Docking Scanner

For iPad, iPad mini and iPhone



User Guide



"Made for iPhone," and "Made for iPad" mean that an electronic accessory has been designed to connect specifically to iPhone, or iPad, respectively, and has been certified by the developer to meet Apple performance standards. Apple is not responsible for the operation of this device or its compliance with safety and regulatory standards. Please note that the use of this accessory with iPhone, or iPad may affect wireless performance.

All trademarks are the property of their respective owners and all rights are acknowledged.



Safety and Precautions

- Never store the unit in hot, or very cold, or humid or dusty places.
- For an extended storage period, we recommend storing the unit in a cool and dry place.
- To help keep the scanning area clean, store the unit in a proper case when not in use.
- If the unit is left in extreme cold or hot conditions, allow to adjust to normal room temperatures before use.
- Only use accessories included with the unit.
- When left unused for a long period of time, the unit should be disconnected from the power supply.
- Always handle the unit with care. Avoid dropping and strong impact.
- Keep the lens and roller clean and free from scratches.
- Do not scan sharp objects or hard abrasive surfaces.
- Do not scan documents with glue, grease, correction fluid, or wet ink on it which can cause malfunctions.
- Do not scan adhesive-backed paper or labels as these may become detached during scanning and cause damage.
- Operate the unit on a level, well-grounded work surface, and free of excessive vibration.
- Don't open the unit. Risk of electric shock.
- Use only a soft damp cloth to clean the exterior areas of the unit.
- Do not leave the unit within the reach of children.



Discarded electrical and electronic appliance are recyclable and should separate from the household waste. Please actively support in conserving resources and protecting the environment by returning this appliance to the collection centers (if available).

Contents

Safety and Precautions	2
Contents.....	3
Supported Devices.....	4
Quick Start	5
Unpack.....	6
Scanner Parts	7
Connect and Turn on.....	8
Attach the Plastic Clamp	9
Dock and Install the iScan Pro App.....	10
Scan and Save	11
Use the Photo Sleeve	12
Clean.....	13
Cleaning the Rollers	13
Cleaning the Lens	14
Calibrate	15
Charge the Device	16
Helpful Hints	17
Specifications.....	18

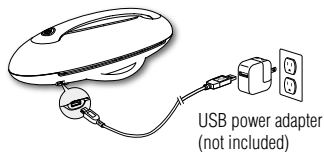
Supported Devices

This scanner is compatible with following devices:

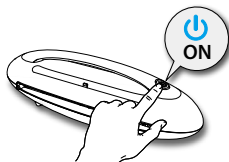
- iPad (4th generation) and iPad mini with iOS 6.0 or later.
- iPhone 5 with iOS 6.0 or later.

Quick Start

1 Connect to a power source.



2 Turn on the power.



3 Dock your device.



4 Install the 'iScan Pro' app.

Install 'iScan Pro'
from the App Store.



5 Insert a photo, press '**Scan**'. **6** Press '**Save**' to save the image.



Unpack

Make sure following items are included.



Scanner



USB Cable
(See p.8)



Calibration Card
(See p.15)



Cleaning Board
(See p.13)



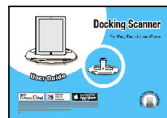
Cleaning Strip
(See p.14)



Photo Sleeve
(See p.12)



Plastic Clamp
(See p.9)

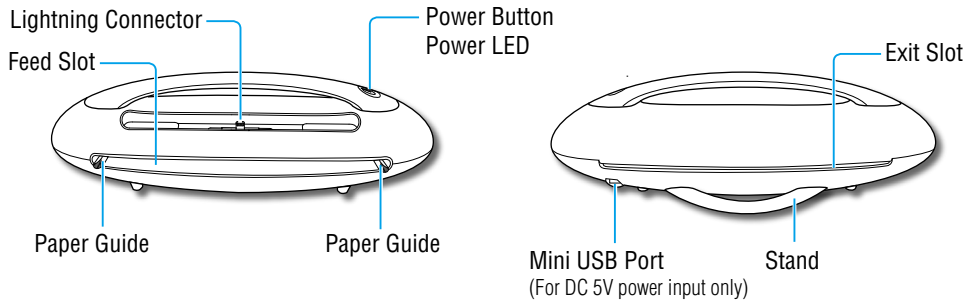


User Guide


NOTES

Please use the original USB power adapter that comes with your device for power supply.


Scanner Parts



Connect and Turn on

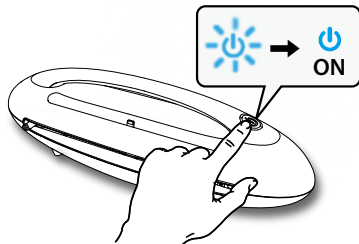
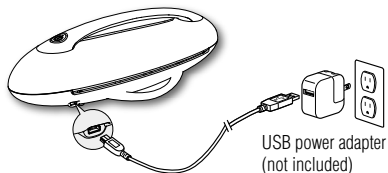
1. Connect the USB Cable to the Scanner, and connect the other end to the USB power adapter included with your device.
2. Connect the USB power adapter to a power outlet.
3. Long press the  button for 3 seconds to turn on the Scanner.
 - ※ The Power LED blinks blue light rapidly at first, then remains steady.

Turn Off the Power

Long press the  button for 3 seconds to turn off the Scanner.

NOTES

- In case of insufficient power supply, do not connect the Scanner to a computer or mobile device for a power input.
- The Scanner will turn off automatically after 5 minutes if your device has not connected yet for power saving.

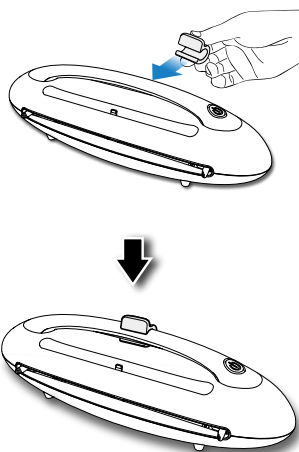


Attach the Plastic Clamp

Attach the supplied Plastic Clamp to the handle of the Scanner to cushion between your device and the Scanner.

NOTES

Frequently attaching and detaching the Plastic Clamp can develop scratches on the surface of the handle.



Dock and Install the iScan Pro App


1. Turn on your device. Hold and gently dock it to the Lightning Connector. Make sure it sits firmly in place.
2. An **'App Not Installed'** message will appear to redirect you to the App Store for installing the iScan Pro app, press **"App Store"**.
 - × If the message didn't appear, go to the  App Store to search 'iScan Pro' to install it manually.
3. Upon completion, the iScan Pro app icon will appear on your device's home screen with an App launch message. Press **"Allow"** to launch the app.

NOTES

- Be cautious when you dock your device. Do not bend your device forward as it may damage the connector and your device.
- Ensure that your device has internet access via a service provider or wireless connection.
- Do not perform other activities on the device during installation.

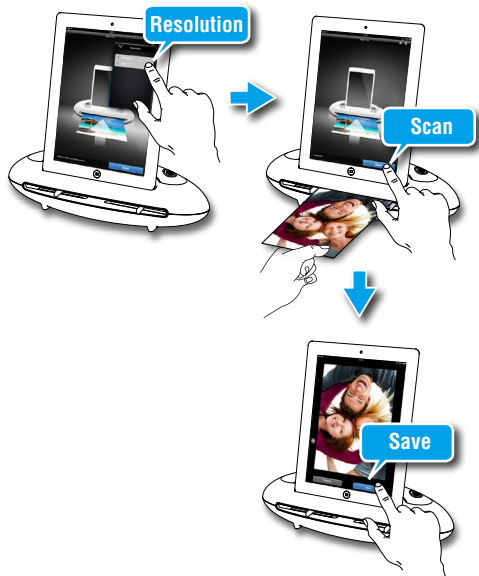


Scan and Save

1. Press the  (Settings) icon at the top-right corner, select the **Resolution (Standard or Fine)**.
2. Place a photo/document facing up into the Feed Slot, adjust the Paper Guides, gently push it in until it is pulled into the Feed Slot.
3. Press the **Scan** button.
 - ※ It starts scanning with a real-time preview.
4. Press the **Save** button to save the image to your device's photos library.
 - ※ If you wish to scan again press **Cancel** button and repeat above steps.

NOTES

When using the Scanner the first time with a device running iOS 6 or above, a message 'iScan Pro Would Like to Access Your Photos' will appear after pressing **Save** button, press 'OK' to save images to the device's photos folder. If you select 'Don't Allow', no image will be saved.



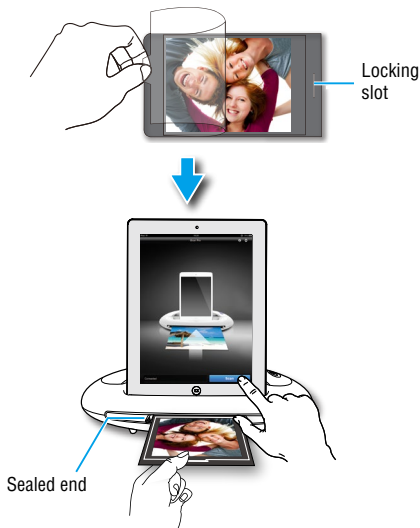
Use the Photo Sleeve

Use the Photo Sleeve when photos are fragile or small to avoid damage or jams, and get the best result.

1. Remove the plastic foil on the Sleeve, place the photo inside of it, insert the tab into the slot at the open end.
2. Insert the sealed end of the Sleeve facing up into the Feed Slot, then adjust the Paper Guides. Follow p.11 to start scanning.

NOTES

- Acceptable paper thickness is between 0.08mm~0.6mm. Exceeding that range may cause misfeed or jams.
- Scanning sharp objects, abrasive surfaces stapled paper can damage the lens and other parts.




Clean

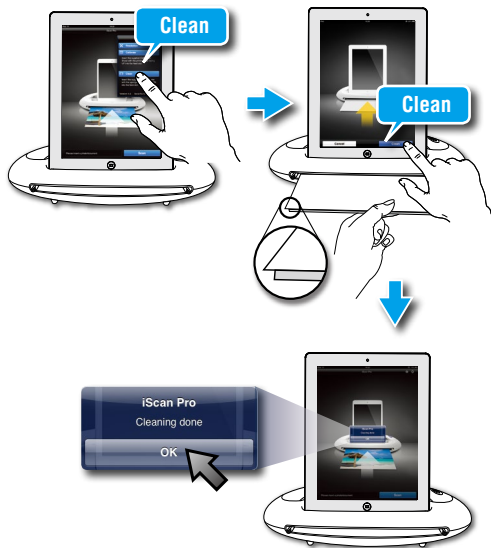
Dirt and residues can build up inside the Scanner and affect image quality. Clean Scanner's rollers and lens periodically to get the best result.

NOTES

- Make sure the Cleaning Board and Cleaning Strip are clean and free of dust before use.
- Use a soft cloth dampened with alcohol to remove dirt and stains from the Cleaning Board if necessary.
- Using small drops of alcohol on the cotton side of Cleaning Strip can help clean lens easily.

Cleaning the Rollers

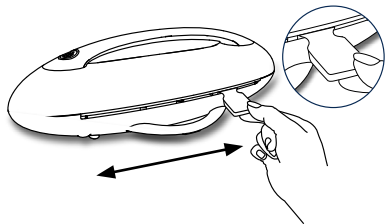
1. Open iScan Pro. Press the  (Settings) icon at the top-right corner, select the **Clean** setting.
2. Hold the foam strip of Cleaning Board facing down, gently insert it into the Feed Slot.
3. Press the **Clean** button to begin the process.
 - ✘ The Cleaning Board will be pulled into the Scanner. Wait until the Board is ejected with a 'Cleaning Done' message, then press the **OK** button.
 - ✘ Mechanical sounds produced during the cleaning process are normal.



Clean (cont'd)


Cleaning the Lens

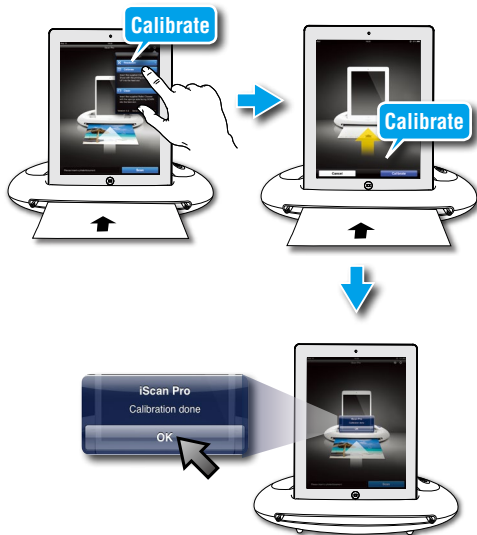
1. Turn **off** the Scanner, remove the device.
2. Hold the foam grip handle of Cleaning Strip facing down.
3. Insert the thinner end with cotton side facing up into the Exit Slot from the rear of the Scanner.
4. Gently move the Strip from side to side as many times as necessary, then remove it.



Calibrate

NOTES

- Always clean Scanner's rollers and lens first before calibration. If cleaning rollers and lens did not improve image quality, then perform calibration.
 - If necessary, perform calibration few times until image quality is improved.
 - Make sure the Calibration Card is clean and free of dust before use.
1. Open iScan Pro. Press the  (Settings) icon at the top-right corner, select the **Calibrate** setting.
 2. Remove the plastic foil on the Calibration Card, insert it in the Feed Slot with the arrow mark facing up and pointing to the Scanner.
 3. Press the **Calibrate** button.
 - ✘ The Calibration Card will be pulled into the scanner. Wait until the Card is ejected with a 'Calibration Done' message, then Press the **OK** button.
 - ✘ Mechanical sounds produced during the calibrating process are normal.



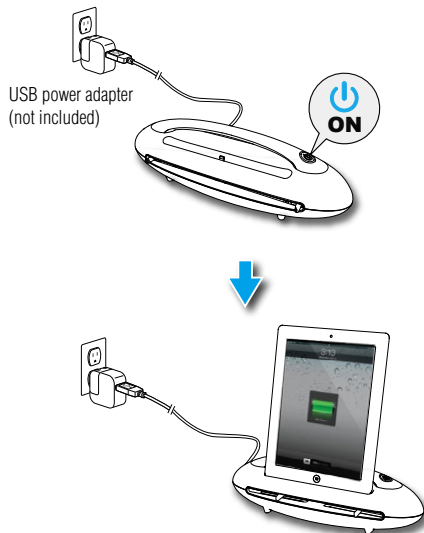
Charge the Device

Your mobile device will start charging when it is docked to the Scanner that is turned on.

※ Your device's screen will indicate its charging status.

NOTES

- Your device will not charge when the Scanner is in operation.
- If your device is not charging, remove your device and reconnect it to start charging again.
- To ensure scanning operation, charge your device if the battery has less than 20% capacity remaining.



Helpful Hints

Scanner does not turn on.

- Check if the USB cable is connected properly, and the Scanner is turned on.
- The Scanner turns off automatically in 5 minutes when your mobile device has not connected to it yet.

iScan Pro does not launch when the device is docked.

- Make sure the iScan Pro app is installed and the device is docked correctly.
- Check if the device is off or locked. Refer its own manual to unlock.

Cannot charge my device.

- Your device will not be charged when the Scanner is in operation.

The scan result is poor.

- Clean the Scanner's rollers and lens first. If image quality does not improve, please perform calibration.
- Do not use the Photo Sleeve if the photo is laminated.

Cannot feed the paper.

- Remove the photo/document from the feed slot and insert it again until it is pulled in by the rollers.
- Check if the paper thickness is exceeded the limit.
- Do not scan more than one page at a time; otherwise the extra pages may not feed properly.

Cannot scan and/or save.

- Charge your device if the battery has less than 20% power.
- Close other running apps on the device to release memory.

On the Apple device, a message 'iScan Pro Would Like to Access Your Photos' appears after pressing SAVE button

- This is a privacy settings requested by your device. Press 'OK' button in order to save images to your device. If you select 'Don't Allow', no image will be saved, and you will get an error message for the the next scan. Follow on-screen instructions to solve the problem: select Settings > Privacy > Photos > iScan Pro > "ON".

The scanner behaves abnormally.

- Do not connect/disconnect your device when the Power LED is flashing.

Specifications

Scanner Type	Sheetfed Scanner
Image Sensor	Color CIS
Light Source	LED (R, G, B)
Scan Size	Min. 55mm x 90mm (2.2" x 3.5") ; Max. 216mm x 356 mm (8.5" x 14") (W x L)
Scan Thickness	0.08mm ~ 0.6mm (with supplied Photo Sleeve)
Scan Resolution	Standard (300 dpi), Fine (600 dpi)
Scan Speed	12 seconds per page (A4 color) at 300 dpi 40 seconds per page (A4 color) at 600 dpi
Ports	USB mini-B port, Apple Lightning connector
Power Source	Output: 5V, 2.4A by iPad USB power adapter (not included) Output: 5V, 1.0A by iPhone USB power adapter (not included)
Power Consumption	12W (5V,2.4A Maximum) for iPad 5W (5V,1.0A Maximum) for iPhone
File Format	JPEG
Auto Power-off	Auto shutdown after 5 minutes when not in use.
Dimensions	331 x 110 x 98 mm (13" x 4.3" x 3.9") (W x D x H)
Weight	740g (1.63lbs)
Operating Conditions	5°C to 35°C (41°F to 95°F), humidity range 35% to 80% RH, non-condensing
System Requirements	iPad (4th generation), iPad mini, and iPhone 5 with iOS 6.0 or later Minimum 30MB of free space in RAM for iScan Pro installation An iTunes Store account (for iScan Pro download) Internet access (for iScan Pro download)