

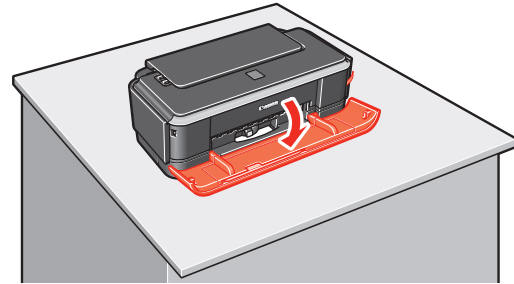


**Important**  
When cleaning the exterior of the printer, use a soft cloth to wipe it gently. For details, refer to "Cleaning Your Printer" in the User's Guide on-screen manual.

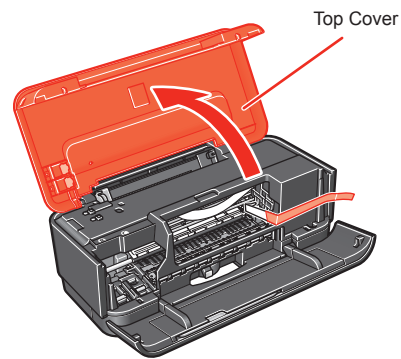
# 1 Prepare the Printer

**1** Unpack the Printer.  
Confirm the included items referring to the illustration printed on the lid of the packing box.  
A USB cable is necessary to connect the printer with your computer.

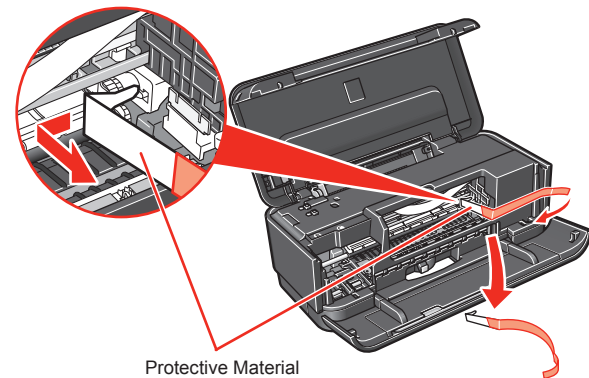
**2** Place the printer on a flat and horizontal surface, and do not place any objects in front of the printer.  
Remove all the shipping tapes and protective material on the outside of the printer. Then open the Paper Output Tray.



**3** Open the Top Cover.

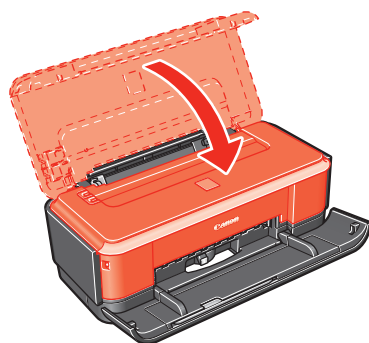


**4** Remove the protective material on the right side.

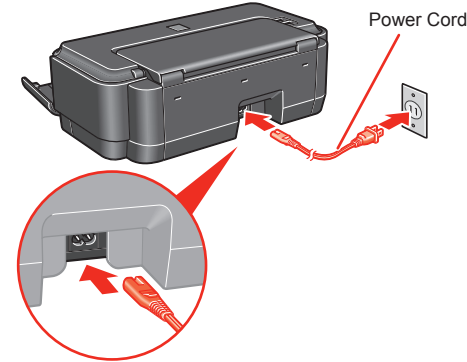


**Caution**  
Before turning on the printer, remove all of the shipping tapes.

**5** Close the Top Cover.

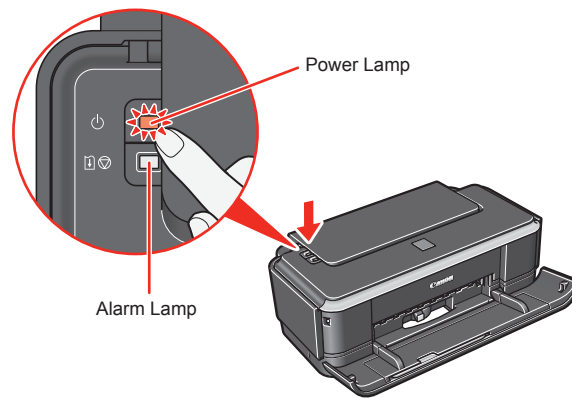


**6** Plug the power cord in the back of the printer and connect the other end to the wall outlet.

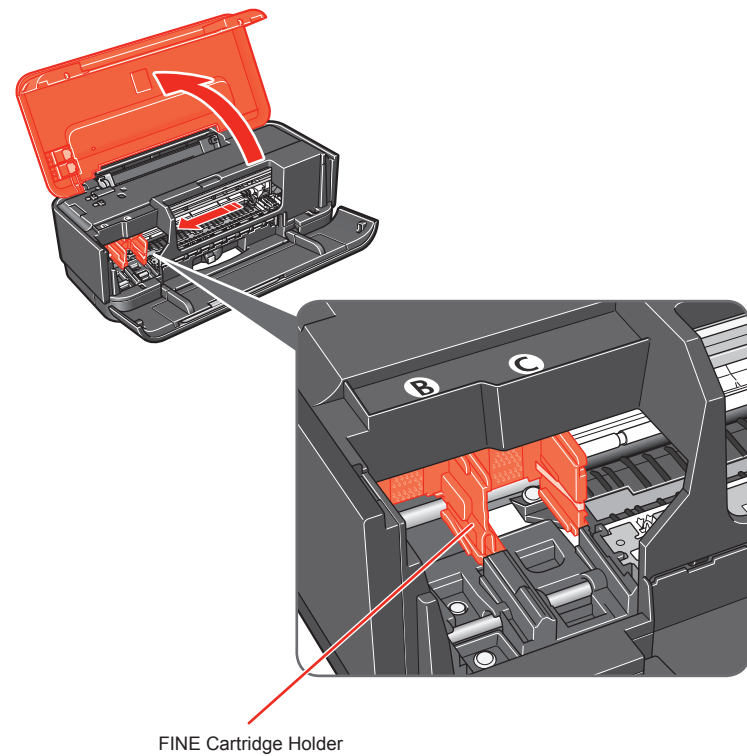


**Important**  
• Do NOT connect the USB cable at this stage.  
• Plug the power cord all the way in, since it may be difficult to plug.

**7** Press the Power button to turn on the printer.



**8** Open the Top Cover. Wait until the FINE Cartridge Holder has moved to the left automatically and stop.

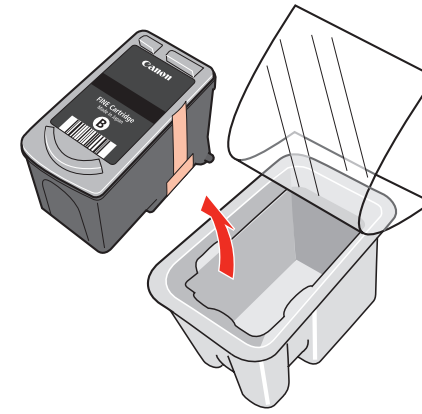


**Caution**  
Do not touch internal parts other than the FINE Cartridge Holder.

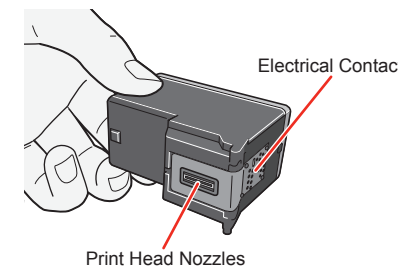
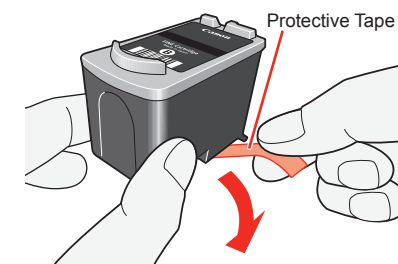
# 2 Install the FINE Cartridges

**Note**  
For the FINE Cartridges compatible with this printer, refer to the back cover of the Quick Start Guide.

**1** Remove the Black FINE Cartridge from its box.



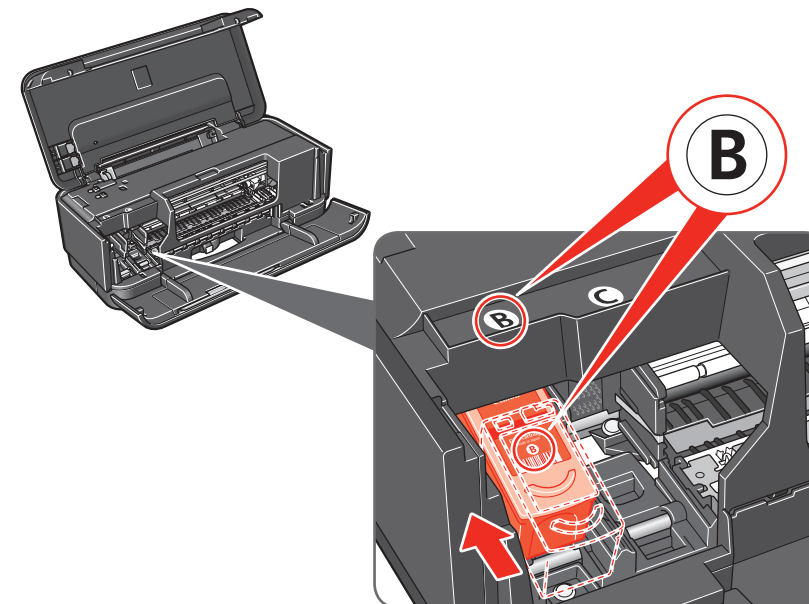
**2** Remove the protective tape gently.



**Important**  
• Do not touch the electrical contacts or Print Head Nozzles on a FINE Cartridge. The printer may not print out properly if you touch it.  
• Do not drop or shake FINE Cartridges as this may cause the ink to leak out and stain your clothes and hands.  
• Do not reattach the protective tape once you have removed it.  
• Be careful not to stain your hands or surrounding work area with ink on the removed protective tape.

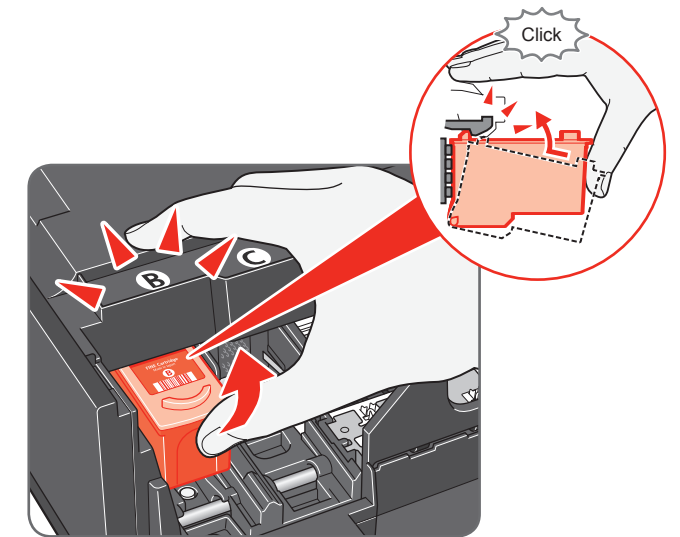
**3** Insert the Black FINE Cartridge slightly slanted into the left slot (B).

**Important**  
• Make sure the printer is turned on and the Power lamp is flashing green.  
• Make sure the FINE Cartridge Holder has moved to the left.

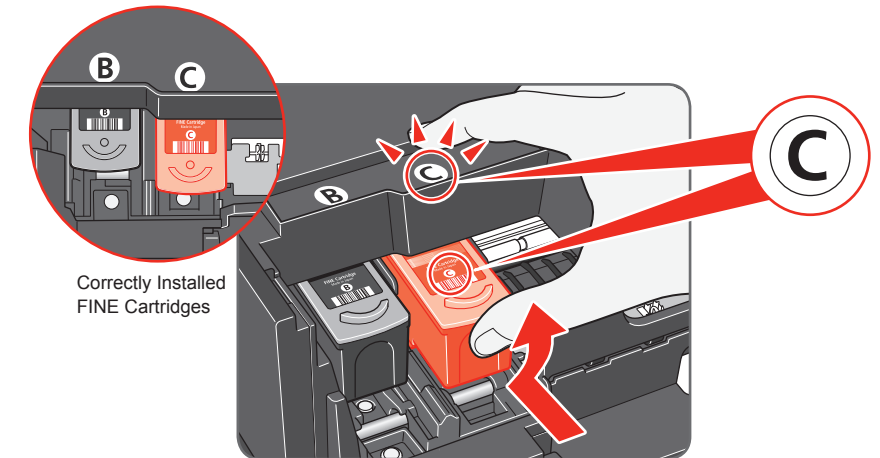


**4** Push up the FINE Cartridge until it clicks into place.

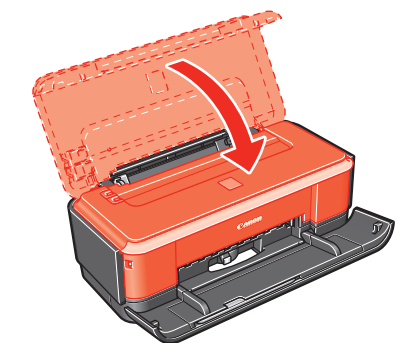
**Important**  
• For correct printer operation, make sure the FINE Cartridge is securely inserted.  
• If the Top Cover is left open for more than 10 minutes, the FINE Cartridge Holder moves to the right side. Close and reopen the Top Cover to return the holder to the left.



**5** Repeat the procedure for the Color FINE Cartridge, inserting it into the right slot (C).



**6** Close the Top Cover.



**Note**  
The Alarm lamp on the printer still flashes orange if a FINE Cartridge is not installed properly. Open the Top Cover and make sure that position of all the FINE Cartridges is appropriate.

**Important**  
Once you have installed the FINE Cartridges, the Power lamp will flash green. Wait for about one to two minutes, until the Power lamp stops flashing and changes to steady, non-flashing green and the printer has stopped making operating noises, before proceeding.

Hardware setup is now complete.  
Next, turn over and install the software.

### Note

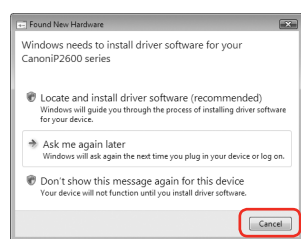
- The screens below refer to Windows Vista™ operating system Ultimate Edition (hereafter referred to as "Windows Vista") installation. Screens may vary depending on the operating system you are using.
- Log into a user account with the administrator privilege.
- Do not switch users during the installation process.
- Quit all running applications before installation.
- A message asking for your confirmation to restart your computer may appear during the installation process. If this message is displayed, follow the on-screen instructions and click **OK**.
- The installation resumes from where it left off when your computer has been restarted.
- If the computer is restarted during installation, do not remove the *Setup CD-ROM* during restarting.

### 1 Be sure to TURN THE PRINTER OFF before continuing.

- Press the **Power** button.
- Make sure that the **Power** lamp stops flashing.

### 2 Turn the computer on and start Windows®.

- Important**  
If the **Found New Hardware** or **Found New Hardware Wizard** screen appears automatically, remove the USB cable connected to your computer. Click **Cancel** to quit the screen. In Windows Vista, the screen may close automatically when the USB cable is unplugged. Then turn off the printer and proceed from step 3 to install the software.

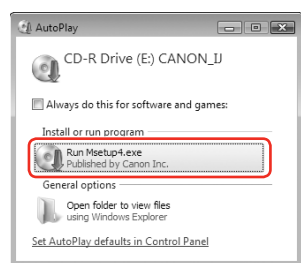


### 3 Insert the Setup CD-ROM. The setup program should run automatically.

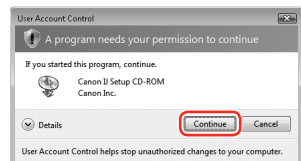
In Windows Vista, go to Step 4. In Windows XP and Windows 2000, go to Step 6.

- Note**  
If installation does not start automatically, double-click the **CD-ROM** icon or **MSETUP4.EXE** contained on the *Setup CD-ROM*.

### 4 If the AutoPlay screen appears, click Run Msetup4.exe.

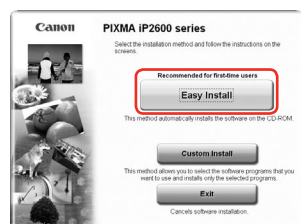


### 5 If the User Account Control screen appears, click Continue. If the same screen reappears in subsequent steps, click Continue.



### 6 When the main menu appears, click Easy Install.

The printer driver, On-screen Manuals, and application software are installed automatically.



- Note**  
If you want to select particular items to install, click **Custom Install** and follow the on-screen instructions to proceed with the installation.  
To install Adobe® RGB (1998), click **Custom Install** and follow the instruction on the screen.

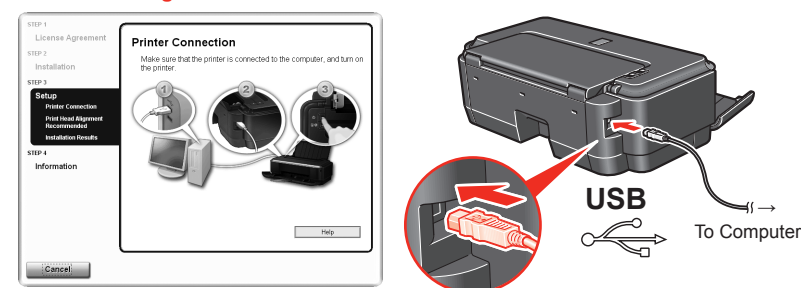
### 7 When the list of software to install appears, confirm the contents, click Install.

- Note**  
Move the cursor over items to display explanations of each application.

### 8 Read the License Agreement carefully and click Yes. The software installation screen may appear during the installation process. Follow the on-screen instructions to install the software.

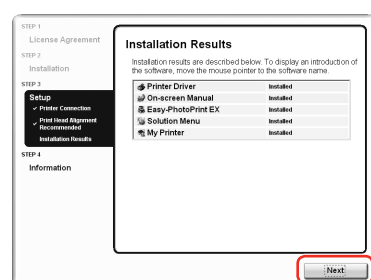
### 9 When the Printer Connection screen appears, connect one end of the USB cable to the computer, the other to the printer, then TURN THE PRINTER ON. The printer driver will begin identifying the printer port being used.

- Important**  
If you cannot go to the next procedure after two minutes, refer to "Troubleshooting" instructions in the *User's Guide* on-screen manual.



### 10 When the Print Head Alignment Recommended screen appears, click Next.

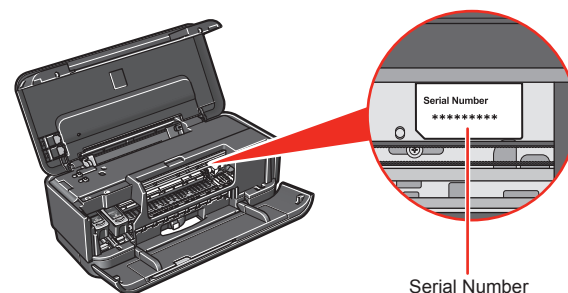
### 11 When the Installation Results screen appears, click Next.



### 12 When the User Registration screen appears, click Next.

- Note**  
To register later, click **Cancel** and go to Step 13. After software installation is complete, double-click on the desktop.

Follow on-screen instructions to register your product. You will need your product serial number, which is located on the inside of the printer.



### 13 When the PIXMA Extended Survey Program screen appears, confirm the message. We would appreciate it if you would take part in this program regarding the use of Canon printers. If you can agree, click Agree.

If **Do not agree** is clicked, the **PIXMA Extended Survey Program** will not be installed but you can use the printer normally.

### 14 When the Installation completed successfully screen appears, click Exit. Remove the Setup CD-ROM after clicking Exit.

If **Restart** is displayed, make sure that the **Restart the system now (recommended)** check box is selected, then click **Restart**. Remove the *Setup CD-ROM* after restarting the computer.

- Note**  
Keep the *Setup CD-ROM* in a safe place in case you need to reinstall the software.

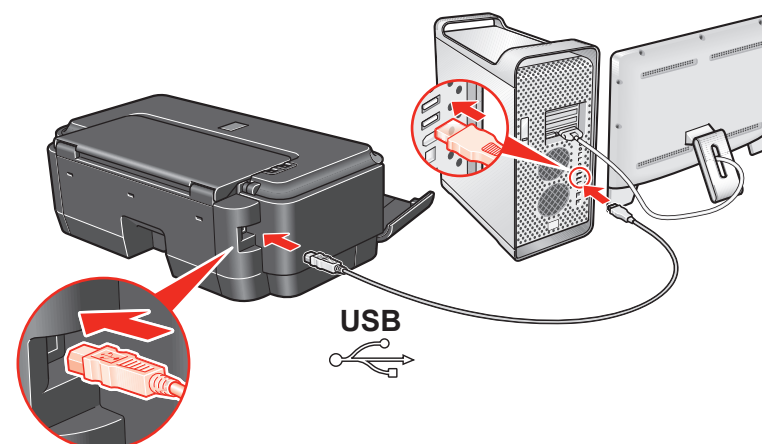
## Software installation is now complete.

### Note

- Since Mac® OS 9, Mac OS X Classic environments, or Mac OS X v.10.3.8 or earlier are not supported, do not connect the printer to these. Use Mac OS X v.10.3.9 or later.
- The screens below refer to Mac OS X v.10.4.x installation. Screens may vary depending on the operating system you are using.
- Log on as an Administrator.
- Quit all running applications before installation.

### 1 Connect one end of the USB cable to the computer, the other to the printer.

- Note**  
Make sure the printer is turned on.



### 2 Turn on your Mac and insert the Setup CD-ROM.

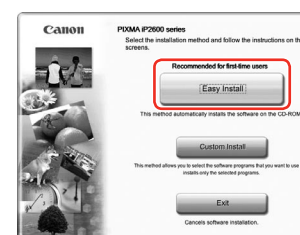
- Note**  
If the **CD-ROM** folder does not open automatically, double-click the **CD-ROM** icon on the desktop.

### 3 Double-click the Setup icon.

### 4 When the Authenticate screen appears, enter your administrator name and password. Click OK. If you do not know your administrator name or password, click ?, then follow the on-screen instructions.

### 5 When the main menu appears, click Easy Install.

The printer driver, On-screen Manuals, and application software are installed automatically.



- Note**  
If you want to select particular items to install, click **Custom Install** and follow the on-screen instructions to proceed with the installation.

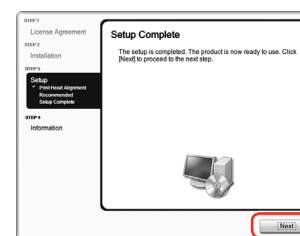
### 6 When the list of software to install appears, confirm the contents, then click Install.

- Note**  
Move the cursor over items to display explanations of each application.

### 7 Read the License Agreement carefully and click Yes. The software installation screen may appear during the installation process. Follow the on-screen instructions to install the software.

### 8 When the Print Head Alignment Recommended screen appears, click Next.

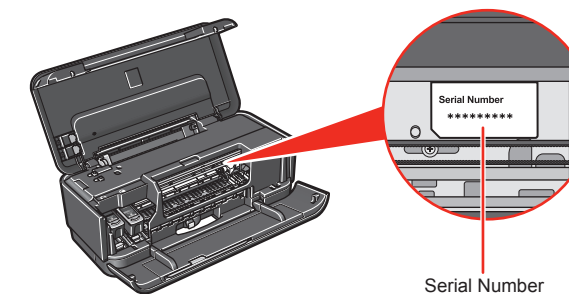
### 9 When the Setup Complete screen appears, click Next.



### 10 When the User Registration screen appears, click Next.

- Note**  
To register later, click **Cancel** and go to Step 11. After software installation is complete, double-click on the desktop.

Follow on-screen instructions to register your product. You will need your product serial number, which is located on the inside of the printer.



### 11 When the Installation completed successfully screen appears, click Restart.

Remove the *Setup CD-ROM* after restarting the computer.



The system is restarted automatically.

- Note**  
Keep the *Setup CD-ROM* in a safe place in case you need to reinstall the software.

## Software installation is now complete.